

# Teraview: Emap Search Tips and Tricks

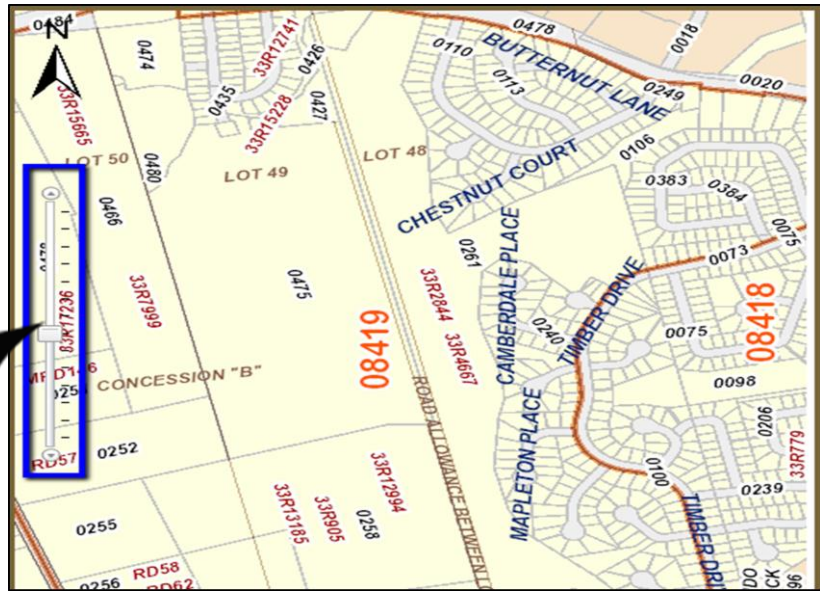
Here are a few Tips and Tricks to help you with your map searches in our new Emap functionality:

## Adjacent PINs ...

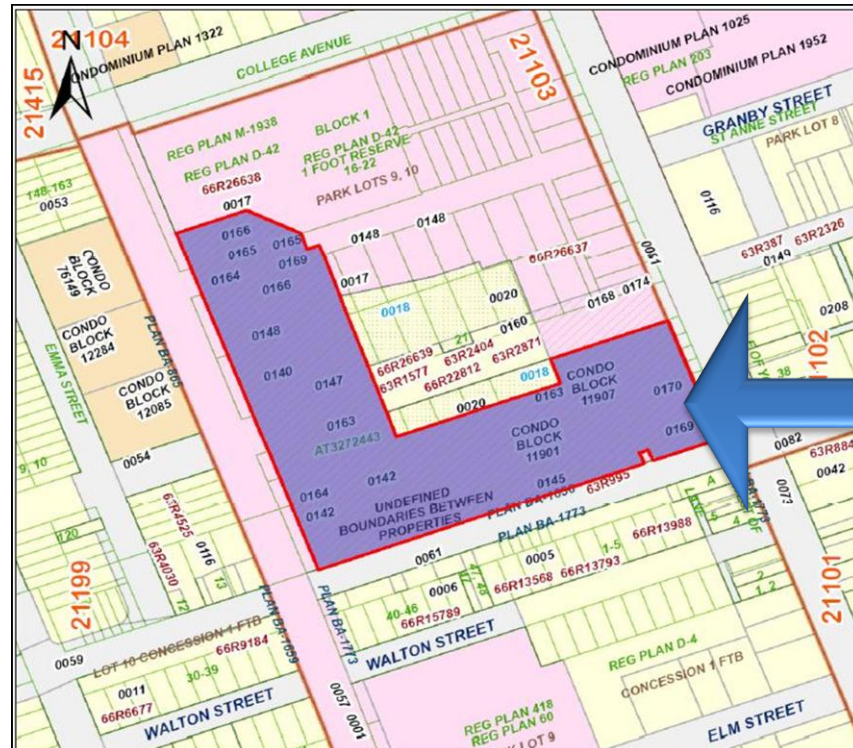
Emap is designed to display certain features at different scales so you might sometimes need to move around a little bit for things to display.

**For example:**

If some adjacent PINs do not appear on the map, zoom in and out around the area of interest.



## Undefined Boundaries ...



If many PINs appear on the same parcel, it is usually to display **undefined boundaries / boundaries on plans.**

## Retrieving Parcels ...

Once you have located an area of interest, you can **only retrieve the parcels once**.

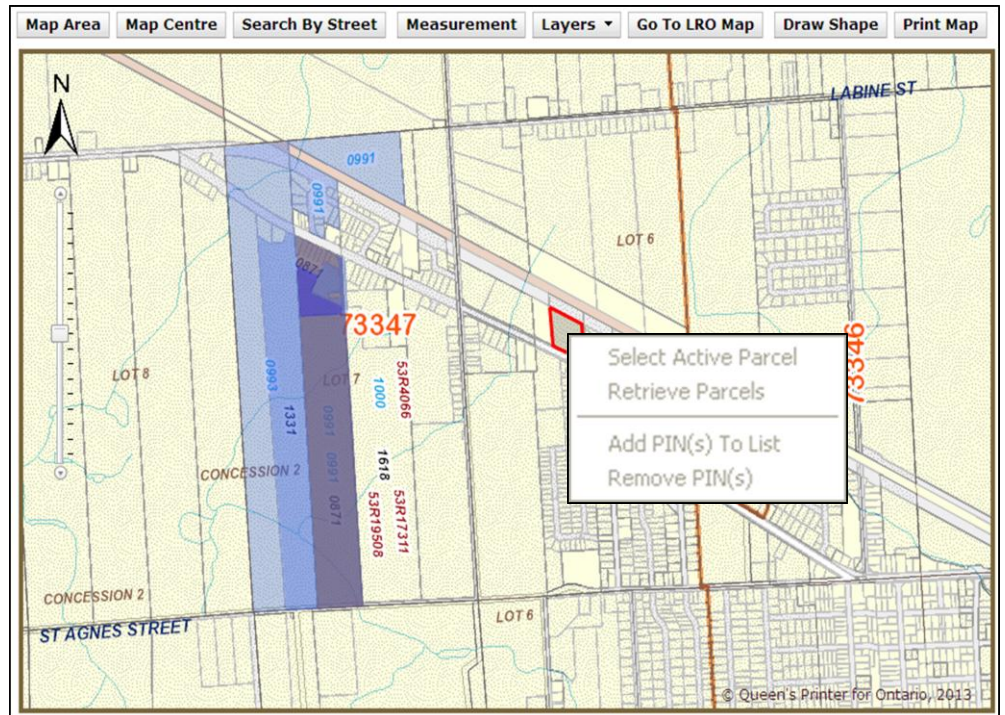
In the event that you want to find a different property that is far away from the current property displayed, you will not be able to search for it. Even if you try to click on the property to retrieve the parcel, it will not display any option.

You need to perform a new search to retrieve the information about the new parcel that you wish to view.

### For example:

You first perform a search for a PIN (73347-03554). However, there is another property that you wish to view. When you right-click on it, you will not get any option.

You need to do a brand new search.



## Printing ...



Before you print a document, ensure that you are zoomed in to a certain level, about midpoint on the scale, to activate the **Print Map** button.



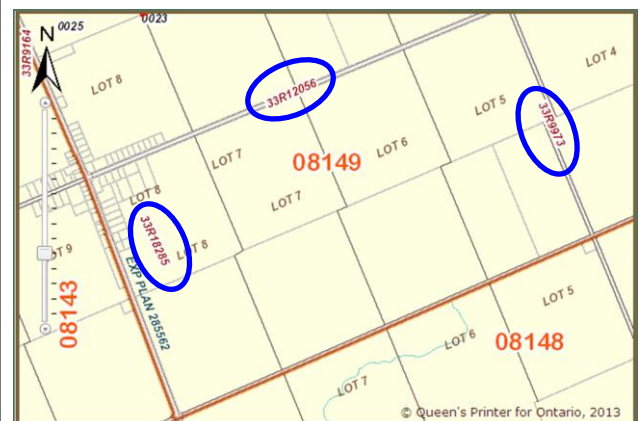
## Reference Plan Text ...

Reference Plan text is only for part of the parcel but appears on the entire parcel. It usually occurs on roads where on one end, a particular reference plan number defines the property yet on the opposite end of the road the reference plan number is still there. The reason for this is that EMAP displays a reference plan once, regardless of which end of the property is viewed.

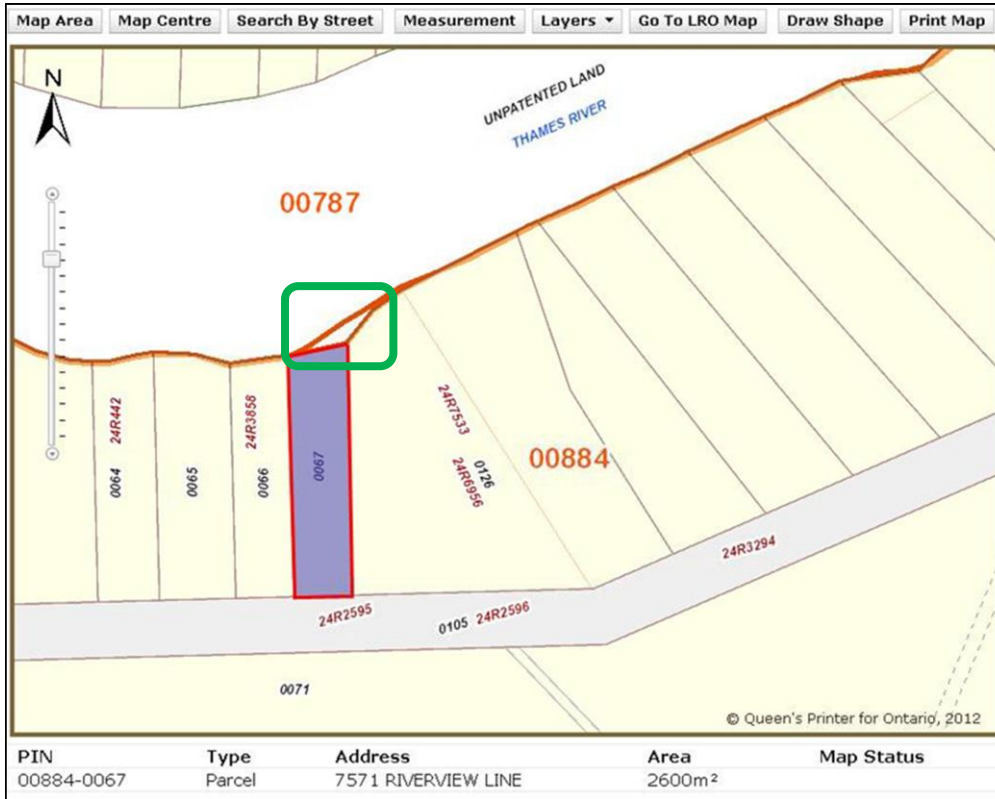
## Map is not updated...

The most common reason why the map is not up to date might be because the parcel that the client is requesting was just recently created. When a PIN is created at the LRO, the title information is available right away. However, it takes the mapping department a few weeks to update the mapping depending on the complexity of the new PIN.

**Note:** The mapping department works from the oldest splits/consolidations to the newest requests.



## Misaligned Boundary ...



In some instances when the Emap software creates block polygons, an adjacent block may not have been updated accordingly and therefore appears to have “an extra parcel”.

## Natural Resource PINs ...



The **Natural Resource PIN** usually contains many Ownership PINs. It is sometimes difficult to select the ownership PIN because the larger PIN will get selected. In order to avoid this, it is best to search the ownership PIN itself first which will also display the Natural Resource PIN information.